

# Christopher Hodgson

ESTATE AGENTS . AUCTIONEERS & VALUERS



Whitstable

£400,000 Freehold

...for Coastal, Country & City living.



• 95/97 Tankerton Road . Whitstable . Kent CT5 2AJ . t: 01227 266441 . f: 01227 266443  
e: sales@christopherhodgson.co.uk, lettings@christopherhodgson.co.uk . [www.christopherhodgson.co.uk](http://www.christopherhodgson.co.uk)

Estate agency services are provided by Christopher Hodgson Limited, a company incorporated and registered in England and Wales with the number 07108955 whose registered office address is at Camburgh House, 27 New Dover Road, Canterbury, Kent CT1 3DN. Lettings and valuations are provided by Christopher Hodgson and Helen Hodgson trading as Christopher Hodgson.

# Whitstable

Bexley Cottage, 12 Bexley Street, Whitstable, Kent, CT5 1HD

\*VIDEO TOUR AVAILABLE\*

Bexley Cottage is an attractive double fronted period house situated in a desirable central location within the conservation area, moments from fashionable Harbour Street with its eclectic mix of independent shops and highly regarded restaurants, Whitstable's working harbour, and approximately 150 metres from the beach.

The beautifully presented accommodation retains much period detail and is arranged on the ground floor to provide a sitting room and a large open plan kitchen/dining room. To the first floor there are two bedrooms and a smartly fitted family bathroom. There is also a useful attic room.

Outside, there is a low maintenance courtyard garden. No onward chain.



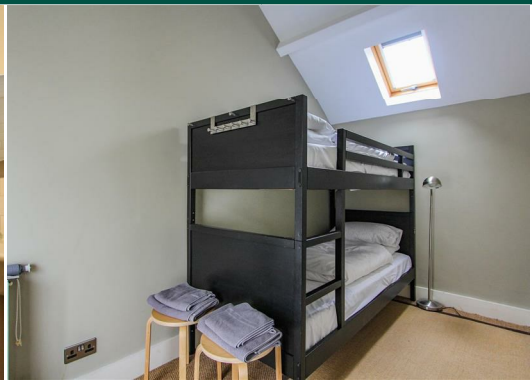
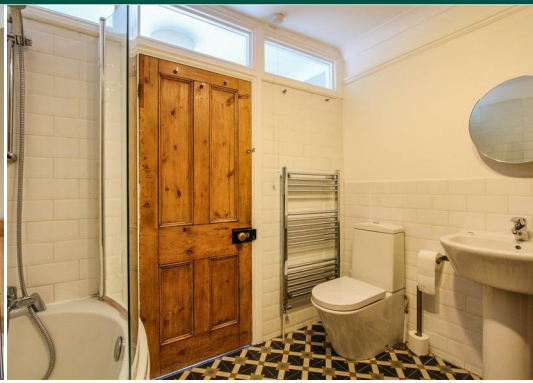
## Location

Bexley Street is situated just off Whitstable's bustling High Street, within easy walking distance of the beach (150 metres distant). Whitstable is an increasingly popular and fashionable town by the sea offering a wide range of amenities including boutique shops, highly regarded restaurants, watersports facilities and working harbour. Whitstable station (0.4 of a mile distant) provides fast and frequent links to London (Victoria) in approximately 80 minutes. The high speed Javelin service provides access to London (St Pancras) with a journey time of approximately 73 minutes. The A299 is accessible providing a dual carriageway link to the M2/A2 giving access to the channel ports and connecting motorway network.

## Accommodation

The accommodation and approximate measurements are:

- **Sitting Room**  
13'0" x 10'1" (3.97m x 3.07m)  
at maximum points.
- **Kitchen / Dining Room**  
20'3" x 13'0" (6.17m x 3.96m)  
at maximum points.
- **Bedroom 1**  
13'3" x 10'1" (4.04m x 3.07m)  
at maximum points.
- **Bedroom 2**  
12'5" x 6'6" (3.79m x 1.97m)  
at maximum points.



• **Bathroom**  
9'5 x 8'0 (2.87m x 2.44m )  
at maximum points.

• **Attic Room**  
23'5 x 8'6 (7.14m x 2.59m)  
at maximum points.

• **Courtyard Garden**  
14'5 x 5'0 (4.39m x 1.52m)  
at maximum points.

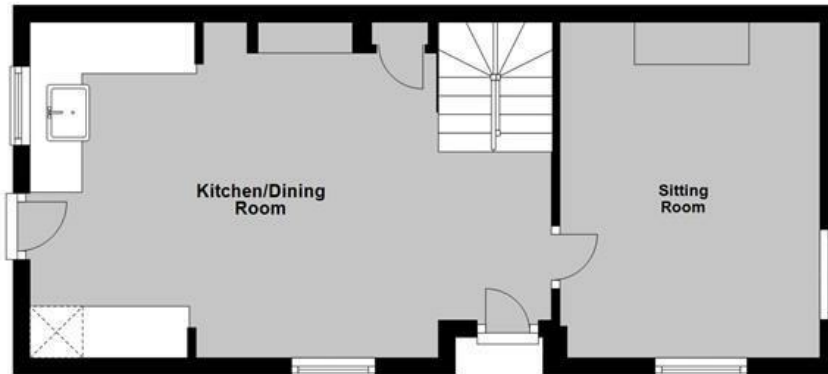
**Video Tour Available**

We won't let social distancing measures stop you from seeing this property. Please view the video tour for this property, and contact us to discuss arranging a physical viewing.



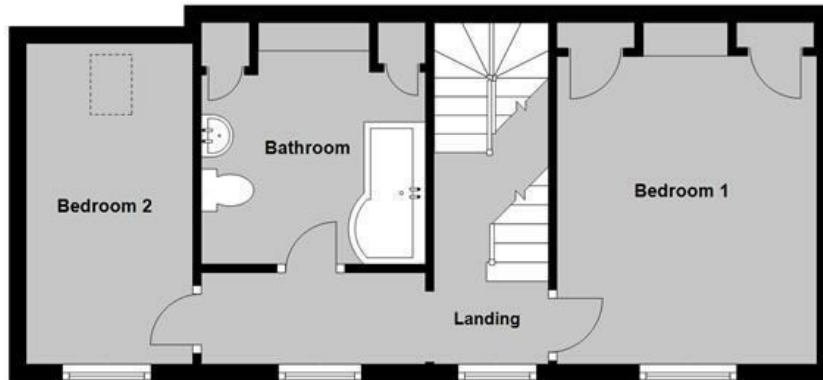
## Ground Floor

Approx. 36.4 sq. metres (391.8 sq. feet)



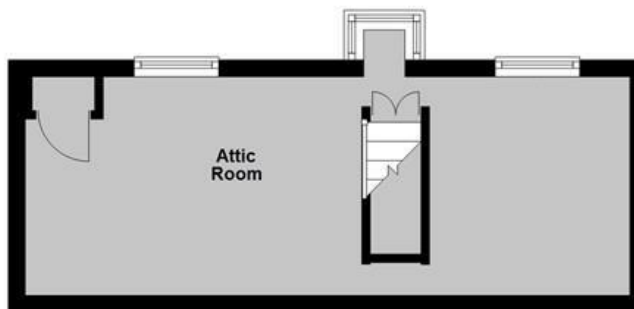
## First Floor

Approx. 37.2 sq. metres (400.9 sq. feet)



## Second Floor

Approx. 18.6 sq. metres (200.3 sq. feet)



Total area: approx. 92.3 sq. metres (993.0 sq. feet)

Council Tax Band to be confirmed.

Viewing: STRICTLY BY APPOINTMENT WITH AGENTS . t: 01227 266441

Christopher Hodgson Estate Agents for itself and as for the vendor or lessor (as appropriate) gives notice that: 1 These particulars are only a general outline for the guidance of intending purchasers or lessees and do not constitute in whole or in part an offer or a Contract. 2 Reasonable endeavours have been made to ensure that the information given in these particulars is materially correct but any intending purchaser or lessee should satisfy themselves by inspection, searches, enquiries and survey as to the correctness of each statement. 3 All statements in these particulars are made without responsibility on the part of Christopher Hodgson Estate Agents or the vendor or lessor. 4 No statement in these particulars is to be relied upon as a statement or representation of fact. 5 Neither Christopher Hodgson Estate Agents nor anyone in its employment or acting on its behalf has authority to make any representation or warranty in relation to this property. 6 Nothing in these particulars shall be deemed to be a statement that the property is in good repair or condition or otherwise nor that any services or facilities are in good working order. 7 Photographs may show only certain parts and aspects of the property at the time when the photographs were taken and you should rely upon actual inspection. 8 No assumption should be made in respect of parts of the property not shown in photographs. 9 Any areas, measurements or distances are only approximate. 10 Any reference to alterations or use is not intended to be a statement that any necessary planning, building regulation, listed building or any other consent has been obtained. 11 Amounts quoted are exclusive of VAT if applicable. 12 Whilst reasonable endeavours have been made to ensure the accuracy of any floor plan contained in these particulars, all measurements and areas are approximate and no responsibility is taken for any error, omission or mis-statement. This plan is for illustrative purposes only and should be used as such by any prospective purchaser. 13 Any mapping contained within these particulars is for illustrative purposes only and should be used as such by any prospective purchaser. No responsibility is taken for any error, omission or mis-statement. 14 Any computer generated images contained within these particulars are for illustrative purposes only and should be used as such by any prospective purchaser.

Room	Energy Efficiency Rating
Living Room	A
Bedroom 1	B
Bedroom 2	B
Bathroom	C
Kitchen/Dining Room	C
Attic Room	D
Landing	D